



Dear Members,

I hope you are all keeping well and steering clear of the dreaded COVID?

I have just had my 4<sup>th</sup> inoculation (booster) at the Mayo centre at Salford Royal, I hope this keeps the virus at bay for a while?

Unfortunately our president Mr Jon Epstein has not been so fortunate and now has the COVID virus, Jon was supposed to have written a follow up article that was featured in our Issue 03 – 2020, but has agreed to write one for our autumn 2022 issue. Best wishes from all our members Jon, 'Get well soon'.

With Jon unable to write his article I have had to fill in the gaps in the newsletter as best I can with extracts from the spring issue of the 'Loop' journal you may find very interesting.

[1] Why we are building a new trauma hospital.

[2] Construction starts on the Royal Oldham hospital extension.

### Call to Action!!

Sophie our social media co-ordinator has written an article on how to take part in our new private Facebook group page open to members of Manchester-IA only, see page 4.

### Spot the ball.

A new Spot the ball competition no 7, and details on how to play are on page 3, and Christine our latest winner, have a go it could be you next!

### Coffee morning South Manchester (Stockport). See back page.

This is the second of our coffee mornings our first was West Manchester, Irlam. We are now looking for a venue for East Manchester and North Manchester, if any member knows of a venue we can use in the above locations, please contact Marlene secretary: [marlene.evans@iasupport.org](mailto:marlene.evans@iasupport.org)

Best wishes to you all , from the Manchester committee:  
Paul – Marlene, Anne & Sophie.

# Why we're building a new trauma hospital

**In February 2021 work began on our new £68million Greater Manchester Major Trauma Hospital. Salford Royal is already home to one of two major trauma centres in Greater Manchester and this new six-story facility will help us treat even more major trauma patients and, with a helipad on top of the building, bring patients to our site even quicker.**

Major trauma patients are those people who have unfortunately suffered the most serious and life-changing injuries, for example, during a fall, accident or road traffic accident.

Our plans to bring fantastic new facilities and equipment to the people of Greater Manchester are inspired by wanting to ensure as many people as possible survive traumatic injuries and have the best chance of leading the rest of their lives unhindered by the injuries they received...people like Kevin Anderson.



Artist impression of the Greater Manchester Major Trauma Hospital.

## Construction starts on Royal Oldham extension

**Northern Care Alliance took a step closer to achieving our ambition to improve patient care in Greater Manchester with the start of the groundworks for a new extension to The Royal Oldham Hospital in January.**

The Trust marked this key milestone in the development with a ground-breaking ceremony with main contractor IHP and the event was attended by Oldham Care Organisation chief officer, David Jago, members of the Care Organisation leadership team and contractors.

Existing structures, including the hospital's old Adult Medicine building have been demolished to make way for the new £28m four-storey extension to the main building. The new development is part of the Greater Manchester Improving Specialist Care programme and is fabulous news for residents across Greater Manchester. It will enable The Royal Oldham Hospital to operate as a hub site for high risk and emergency general and colorectal surgery.

The development will also bring many other benefits for the local economy and the people of Greater Manchester during the construction phase, including the creation of employment, skills, training and supply chain opportunities. To begin with, the contractor, IHP, will be supporting our local talent and economy by recruiting three technical apprentices as work placement students from Oldham College, starting from June this year. IHP will also be guest speakers at Oldham College to talk about working in the construction industry and will be arranging site visits for some students while the build is ongoing. These talks

and visits will provide valuable insight into the construction activities at The Royal Oldham, and the type of roles available in construction.

Oldham Care Organisation chief officer, David Jago, said: "We are delighted that great progress is being made on the new development. We are one step closer to having a new state-of-the-art theatre for emergency and colorectal surgery, rehabilitation facilities and most importantly additional beds. These new facilities will help us to support patients throughout Oldham and Greater Manchester with serious conditions and ensure they receive consistent, high quality patient care."

The new building has been designed by architects working alongside clinicians, operational and support colleagues and patients to ensure every detail is captured with patient wellbeing in mind.

Dr Jonathan Moise, medical director at Oldham Care Organisation, said: "I am delighted and excited to see the construction work underway. The build will house wards and facilities specifically designed for general and specialist colorectal surgery patients. The additional state of the art operating theatre will facilitate more laparoscopic ('key-hole') surgery to improve patients' recovery and experience and shorten hospital stays."

The ground-breaking ceremony with main contractor IHP, Oldham Care Organisation chief officer, David Jago, members of the Care Organisation leadership team and Fiona McLoughlin, DAY PM Ltd, senior project manager and Garry Bowker, regional director IHP (construction).



Clearing the way for work to begin on the new development.

## Spot the Ball Competition No. 7, Burnley verses Liverpool.

The game shown for this issue of spot the ball is Burnley verses Liverpool, not sure of the date. There are 168 squares where the ball may be. You are allowed 5 free goes.

How to play > Example if you think the ball is in square A-12, answer the ball position is in A-12 and my second choice is A-14, until you have entered your **5 entries**. The above example is NOT the correct answer - This one is a tricky and is NOT where you think is the obvious.

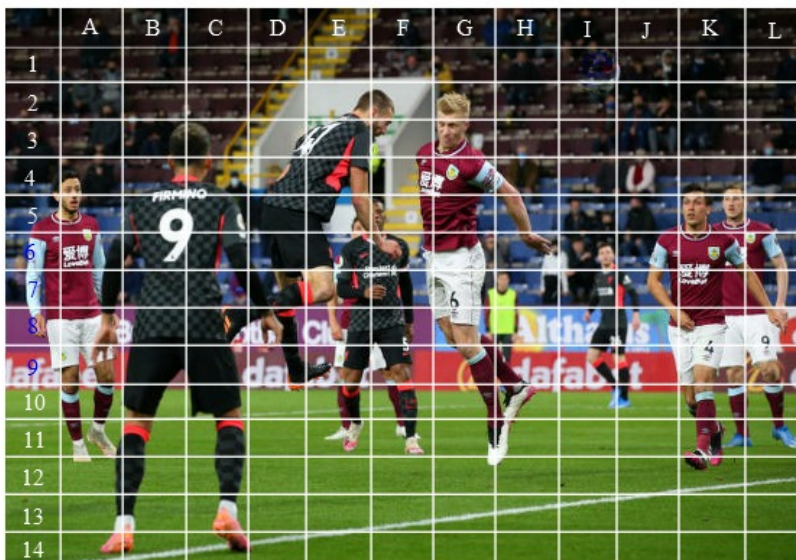
Send your answers to Marlene Evans: phone, 0161 790 9380. Or Email [marlene.evans@iasupport.org](mailto:marlene.evans@iasupport.org) or newsletter editor at Email: [paul.stott@iasupport.org](mailto:paul.stott@iasupport.org)

First with the correct answer where the ball is situated will be the winner, it is important that you answer early as possible as this could be a decider if two members get the correct answer as did in the Winter 2021 competition.

The prize a £10.00 shopping voucher. Competition will be open from June 1<sup>st</sup> to 30<sup>th</sup> June, please do not enter before this date as your entry could be void.

Have a go!! You could be the a winner.

Paul, newsletter editor.



## Results of Spot the Ball competition number 6,

The winner of competition No 6 is Christine from Baguley Manchester,

You may remember Christine had the correct result for our competition No 5, only to be pipped at the post by Charles from Sale with his early entry, but this time Christine is making certain of a win by entering her winning numbers on the morning of the 1<sup>st</sup> March with numbers, L8, M8, M7, M10, **L4**. L4 as the winning square.

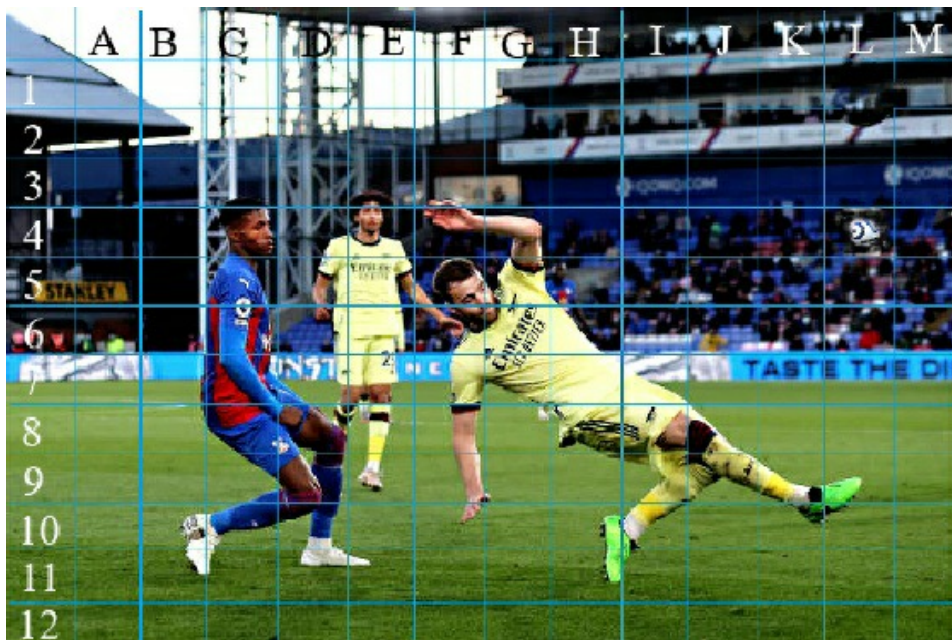
Here you see Christine holding her TESCO voucher for £10-00.



Note:

To give all our members an equal chance of winning, a few of our members are late in receiving their Journals and Newsletter this is why I ask you if you could keep to the requested time for giving your entry results. (Not before 1<sup>st</sup> June)

Paul, Newsletter Editor..



## IA-Manchester - Branch Committee

Chairman,  
Newsletter editor,  
And Greeting card administrator:  
Paul Stott.  
Email:  
[paul.stott@iasupport.org](mailto:paul.stott@iasupport.org)



Secretary / One2One  
Volunteer Co-ordinator:  
Marlene Evans

Email:  
[marlene.evans@iasupport.org](mailto:marlene.evans@iasupport.org)



Open days and events:  
Anne Cross.  
Email:

[anne.cross@iasupport.org](mailto:anne.cross@iasupport.org)



Social Media (Facebook)  
Co-ordinator:  
Sophie Kennedy.

Email:  
[Sophie.kennedy@iasupport.org](mailto:Sophie.kennedy@iasupport.org)



## Subscriptions 2022.

Renewal subscriptions can be paid using any of the details below please - either online, by standing order or via cheque sent to IA national office. Subscriptions are due annually please. If you have yet to pay 2020 subscriptions please arrange to do so ASAP to continue your membership.

Under 60 years of age as at 01.01.2021: £15 PA. Over 60 years as at 01.01.2021: £10 PA.

Please send a cheque made out to **IA BRANCH POOLED**. (Make sure you put your name and address is on the back.)

\* Send to: IA National Office, Danehurst Court, 35-37, West Street, Rochford, Essex, SS4 1BE. \*

Or pay on line at  
<https://www.iasupport.org/membership/renew>

If you want to pay by standing order go to your bank make standing order payable to :  
The Co-operative Bank, PO Box 250, Delf House Southway, Skelmersdale WN8 6WT.

Sort Code: 08-92-99; Account No: 65854408.  
Account Name: IA Branch Pooled.

You can also download a standing order form from  
<http://www.iasupport.org/membership>

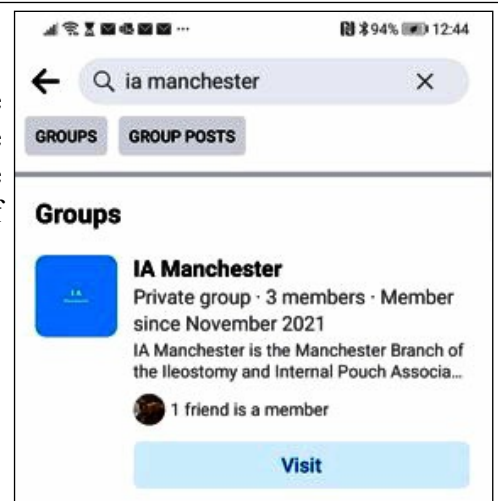
**\* PLEASE DO NOT USE ANY OTHER ADDRESS OTHER THAN IA NATIONAL OFFICE'S ADDRESS ABOVE \***

## Call to Action!!

In our last Newsletter we let you know that we have set up a new private Facebook group where members can chat, discuss issues and be kept up to date with branch activities. What we now need is for you, our members, to please join this Facebook Group to help it become a group that gives you the type of support and information that you need.

There will be an opportunity for you to shape the kinds of topics discussed.

In order to join the group simply go to the groups section on your facebook and search "IA Manchester", as you can see in the picture to the right, and click join group. Admin will then accept you and away you go. **Sophie.**



## [Manchester-IA, Coffee morning 23<sup>rd</sup> July 2022, 10 am to 12 noon. at Heaton Moor United Church Stanley Road, Stockport, SK4 4HL](#)

Please come along to our first venue for South Manchester, bring a friend if you wish.



Heaton Moor United Church

4 manufacturers representatives will be invited with loads of new products to show you, A stoma nurse to answer those problems you may have - plus our own One2One Volunteer Co-ordinator Marlene.

Plenty of car parking spaces (free) entrance on Stanley Road, no need to book, just come along, we will be glad to see you.

Updates will be available on our WEB site <https://manchester.iasupport.org/events>

Our committee will be on hand to answer any of you questions.

Paul, newsletter editor.



PS. Tea will be available too.

